

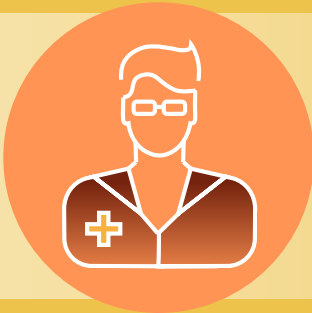
TO PREVENT THE SPREAD OF INFECTION

Contact Precautions



Perform hand hygiene before entering and prior to exiting the room.

Put on gloves before room entry.
Discard gloves before exiting the room.



Put on gown before room entry. Discard gown before exiting the room. Do not wear the same gown and gloves for the care of more than one person.

Use dedicated or disposable equipment. Clean and disinfect reusable equipment before leaving room and using it on another person.



Contact Infection Prevention if you have questions.

www.BowmanDispensers.com • 800-962-4660

2020 BOWMAN® Manufacturing Company, Inc. | i-602-0120 | Ref: HICPAC/CDC Guidelines, 2007